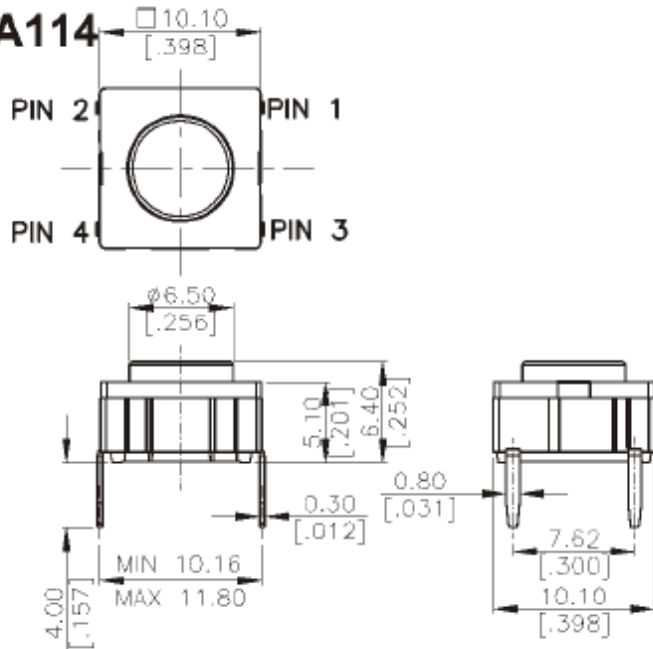




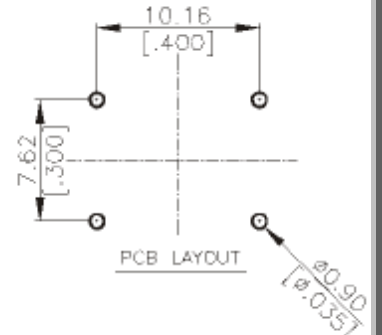
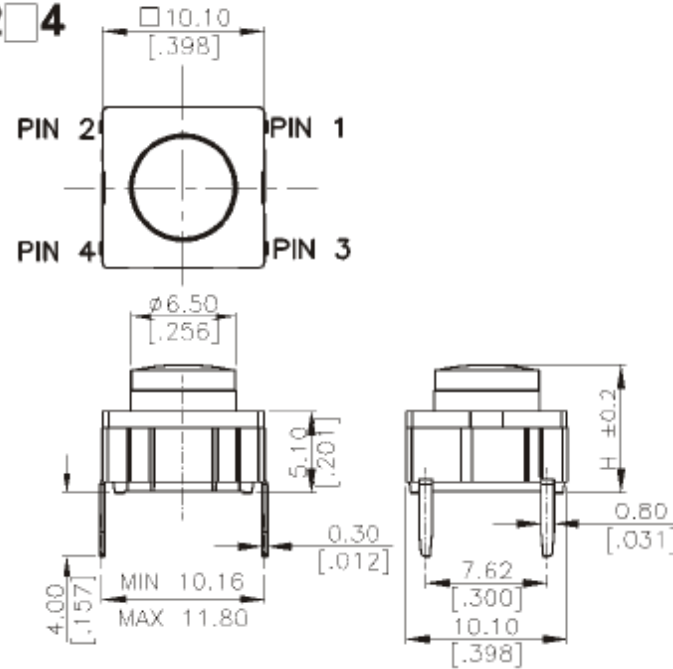
TL□-A(B) SERIES

**DIMENSIONS**

**TL-A114**



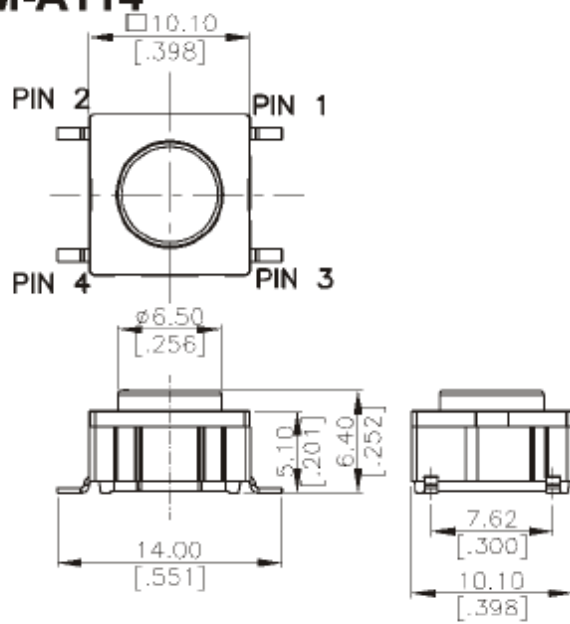
**TL-A2□4**



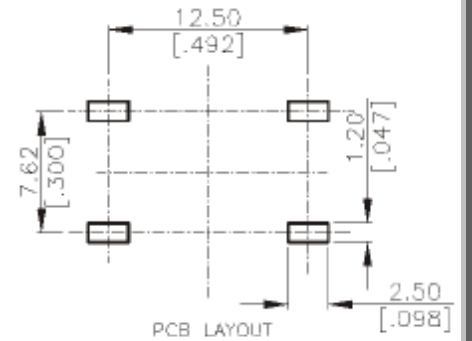
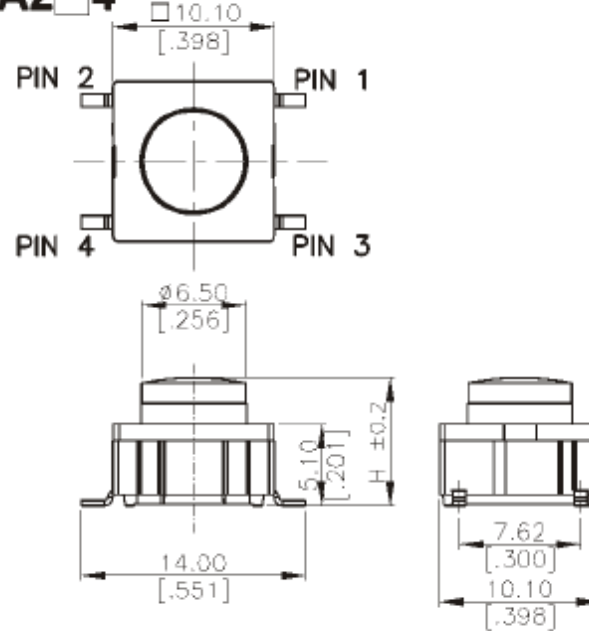
TL-A274□	15.00	.592
TL-A264□	12.00	.472
TL-A254□	11.00	.433
TL-A244□	10.40	.409
TL-A234□	9.50	.374
TL-A224□	8.00	.315
PART NO.	H	

General Tolerance : ±0.2mm

**TLM-A114**



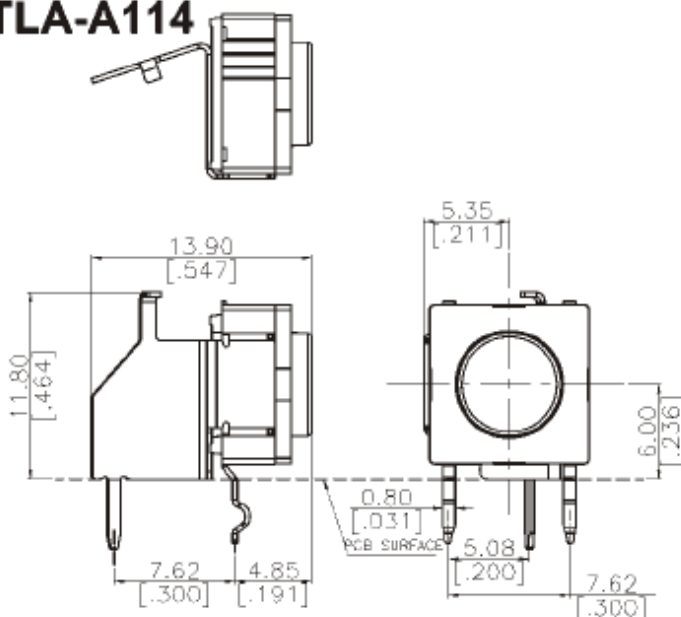
**TLM-A2□4**



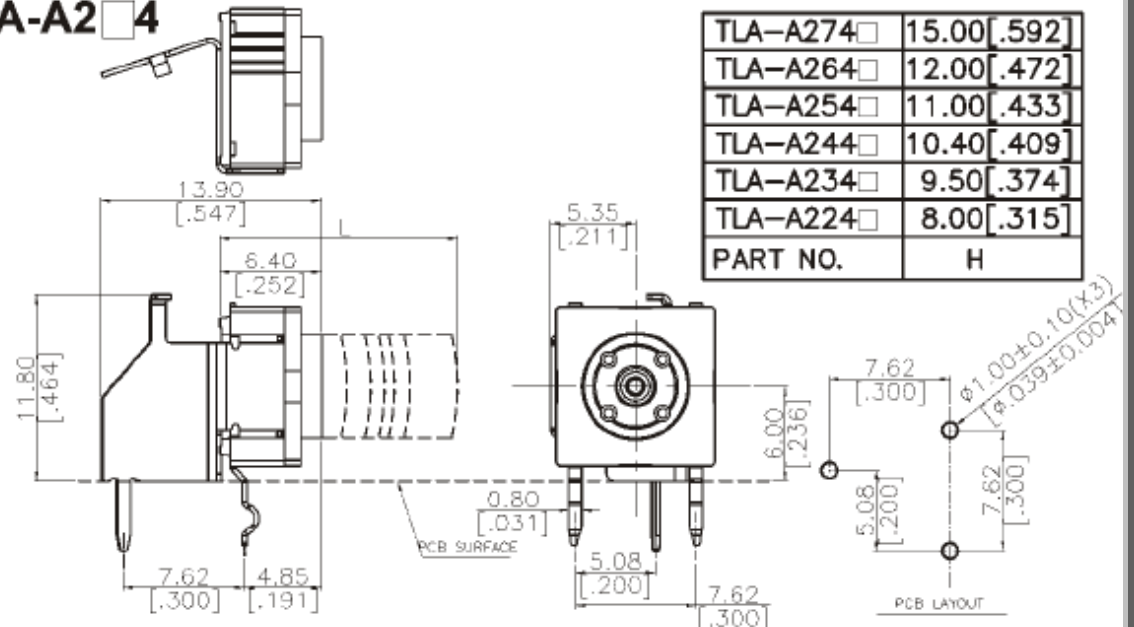
TLM-A274□	15.00	.592
TLM-A264□	12.00	.472
TLM-A254□	11.00	.433
TLM-A244□	10.40	.409
TLM-A234□	9.50	.374
TLM-A224□	8.00	.315
PART NO.	H	

General Tolerance : ±0.2mm

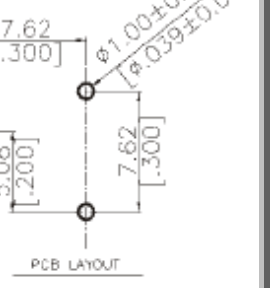
**TLA-A114**



**TLA-A2□4**

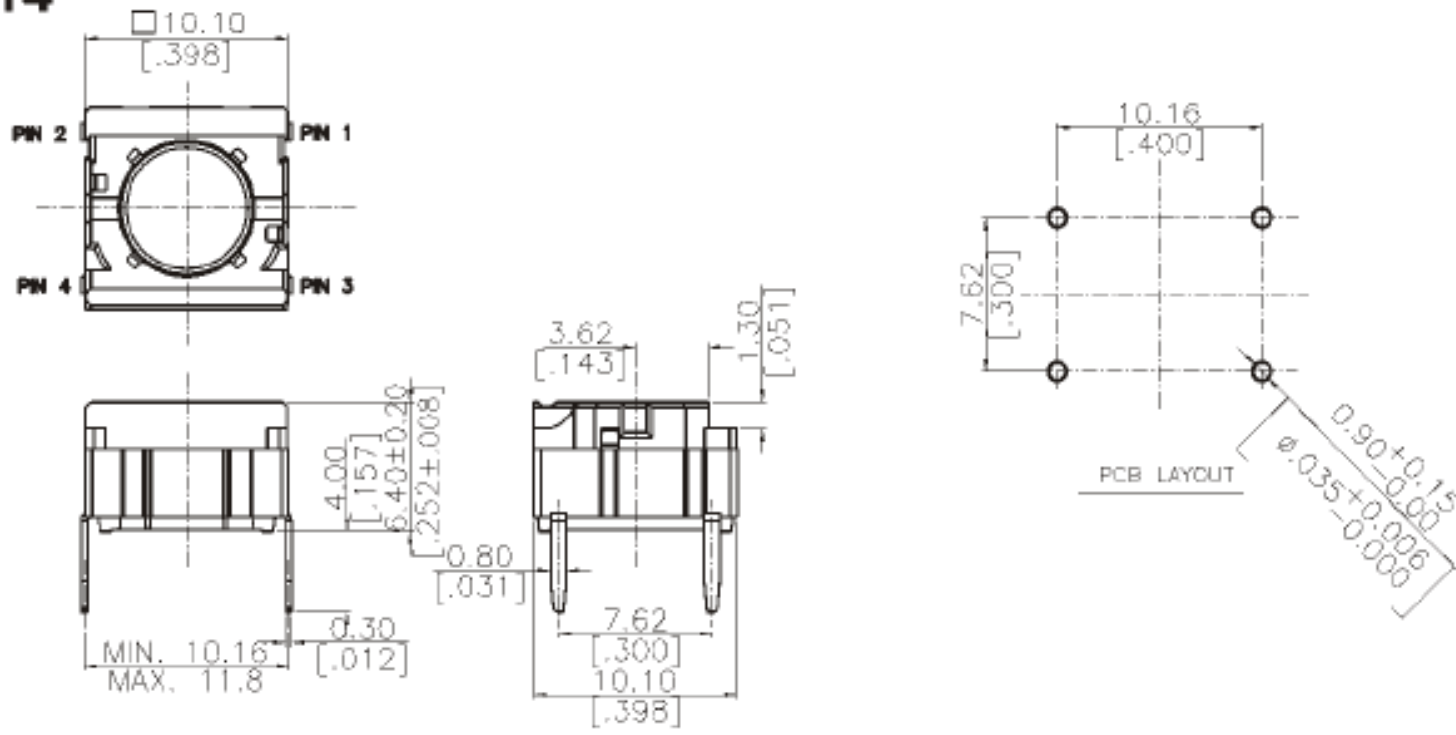


TLA-A274□	15.00	.592
TLA-A264□	12.00	.472
TLA-A254□	11.00	.433
TLA-A244□	10.40	.409
TLA-A234□	9.50	.374
TLA-A224□	8.00	.315
PART NO.	H	



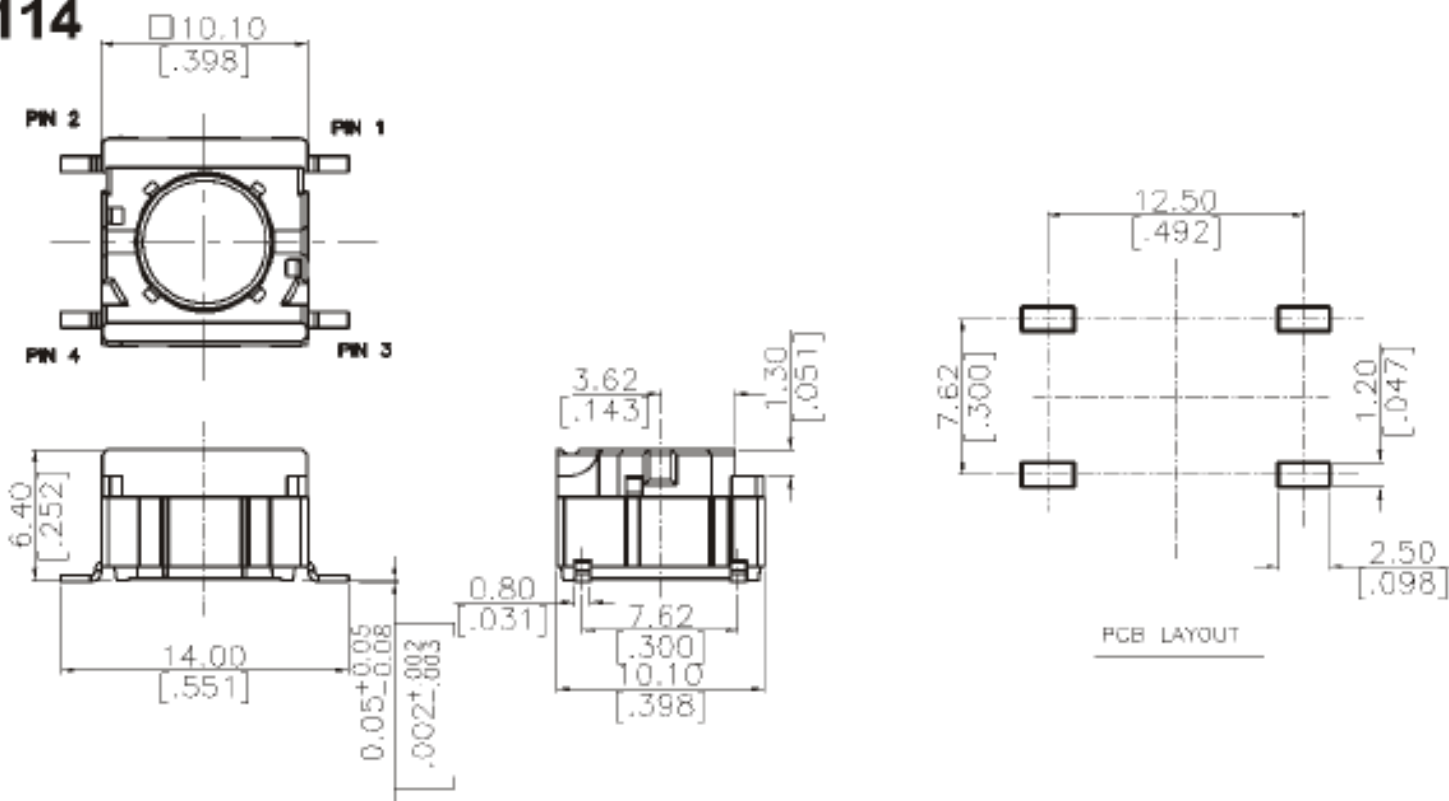
General Tolerance : ±0.2mm

# TL-B114



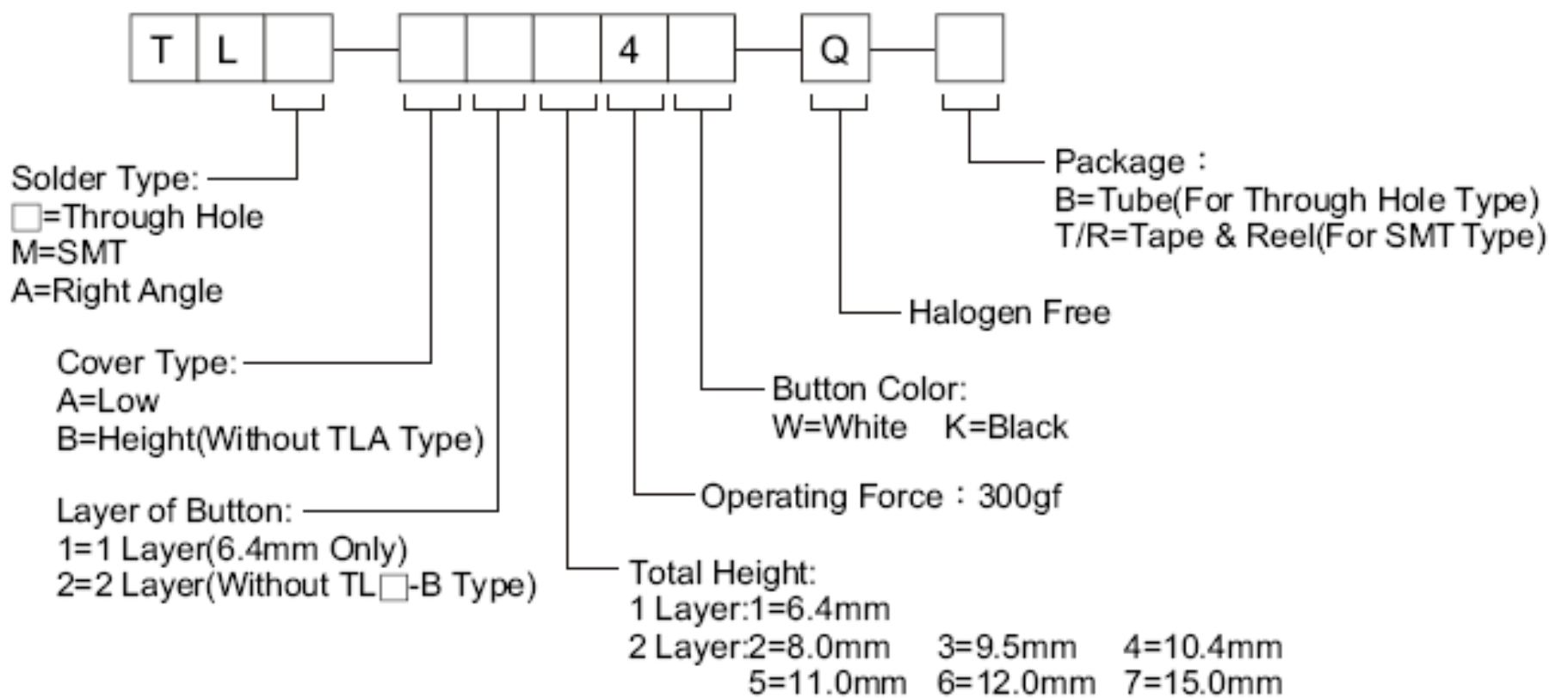
General Tolerance : ±0.2mm

# TLM-B114



General Tolerance : ±0.2mm

## HOW TO ORDER



## SPECIFICATION

### △MECHANICAL

Operation Force:  
300 ± 75gf  
Stroke: 1.0 ± 0.5 mm  
Operation Temperature: -40°C to +160°C  
Storage Temperature: -40°C to +160°C

### △ELECTRICAL

Electrical Life: 10,000,000 cycles  
Rating:0.5~50mA , 24VDC  
Contact Resistance: 30mΩ max.  
Insulation Resistance: 10MΩ min. 100VDC  
Dielectric Strength: 250VAC/ minute  
Contact Arrangement: 1 pole 1throw

## MATERIAL

- △CONTACT DISC: Stainless with silver cladding
- △TERMINAL: Brass with silver cladding
- △BASE: Nylon High-temp. Thermoplastic  
Color: Black
- △COVER: High-temp. Thermoplastic
- △PUSH BUTTON: High-temp. Thermoplastic
- △RUBBER: SILICONE RUBBER
- △METAL HOLDER: NICKEL SILVER

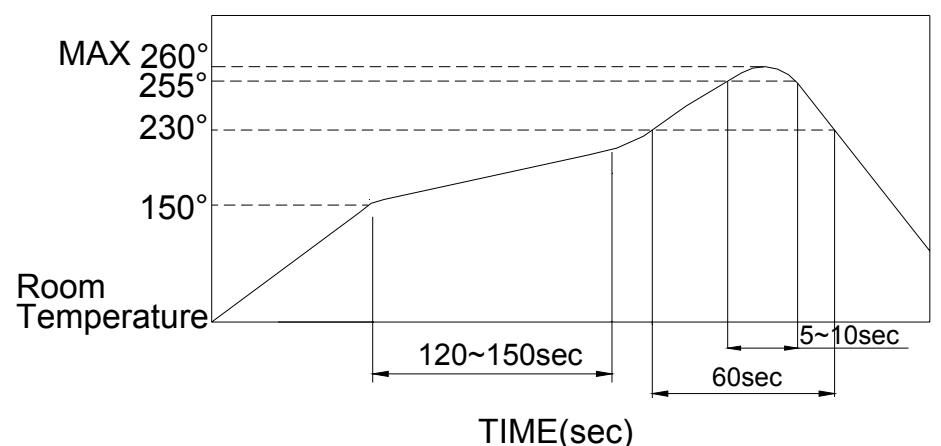
## SOLDERING PROCESS

△WAVE SOLDERING : Recommended solder Temperature at 500°F(260°C) max. 5 seconds. subject to PBC 1.6mm thickness. ( Soldering for through hole type )

△HAND SOLDERING : Use a soldering iron of 30 watts, controlled at 350°C approximately max 5 seconds while applying solder.

△CONDITION FOR SOLDERING : Reflow & non-washable type

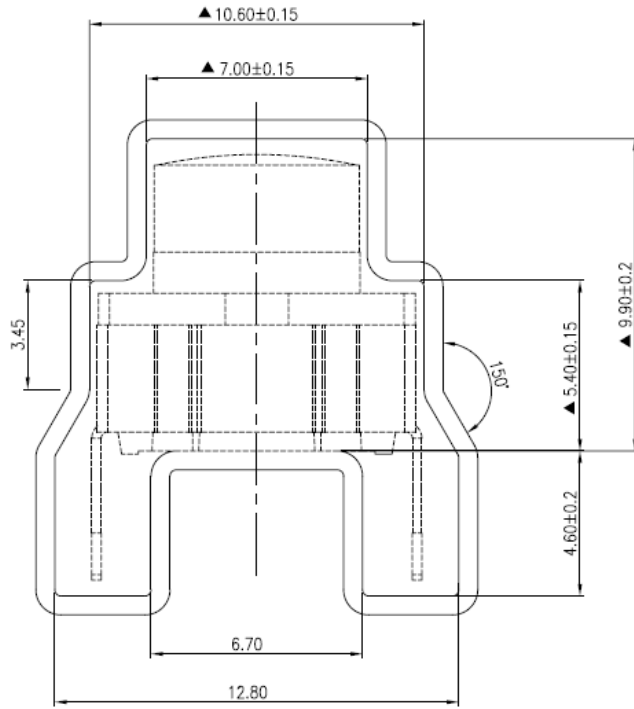
### △Temperature Profile :



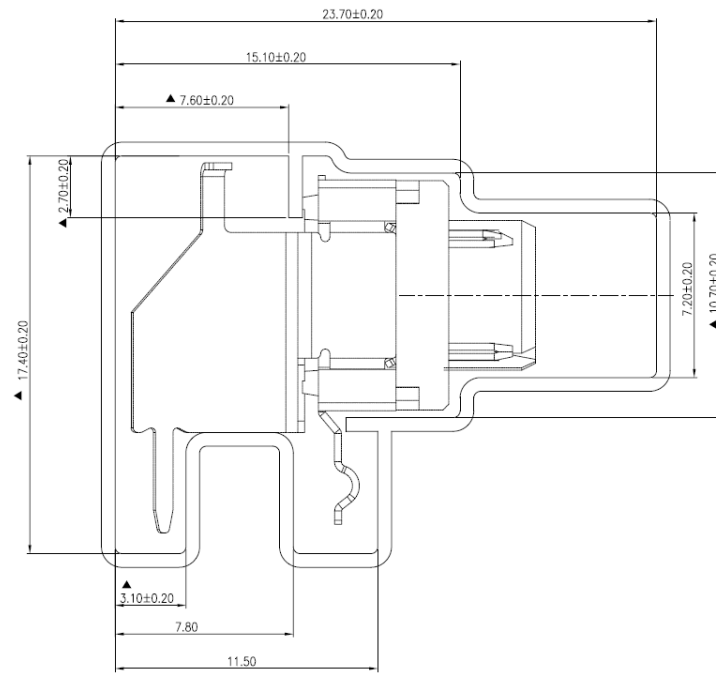
# PACKING

Part Number	Number Per Tube	Number Per Reel
TL-A/B.TLA-A	45	
TLM-A/B		650

TL-A/B



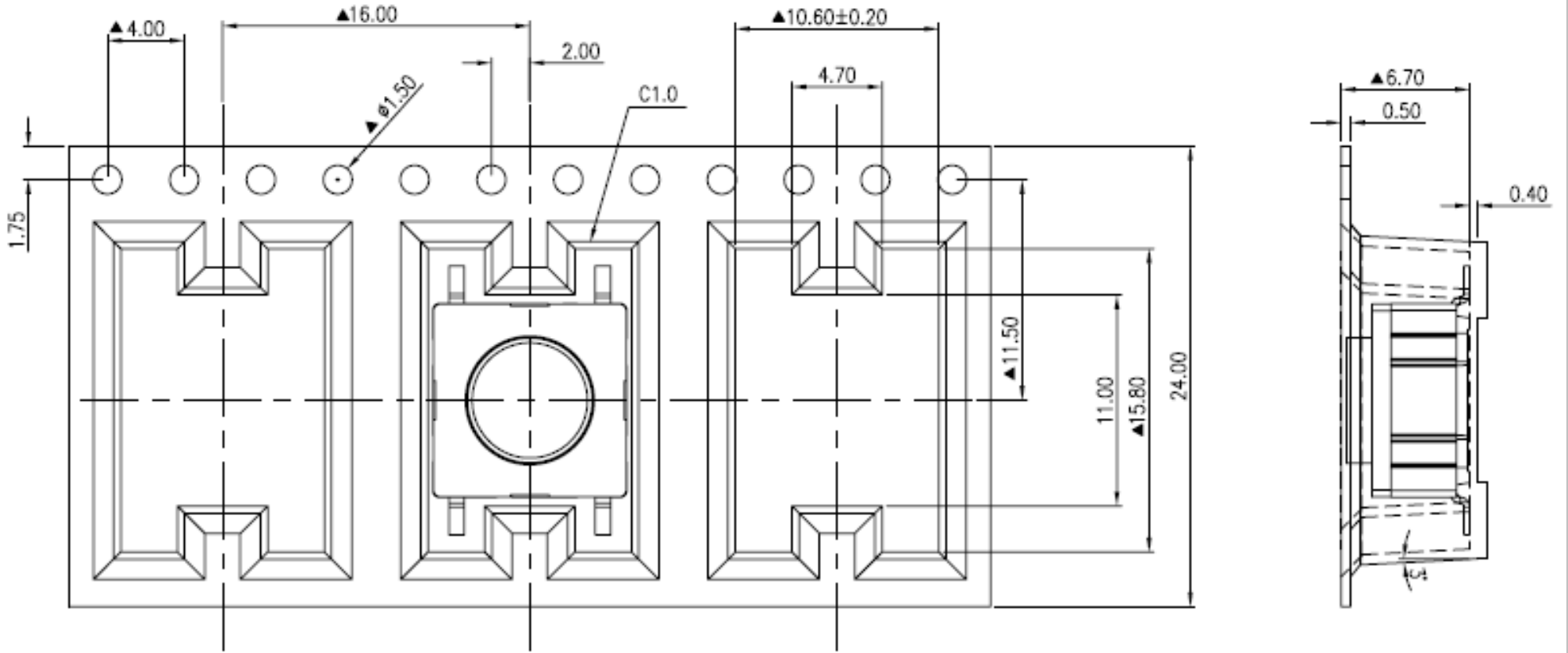
TLA-A



General Tolerance : ±0.2mm

# TLM CARRIER

NOTE:  
1.General Tolerance:±0.1mm.



General Tolerance : ±0.1mm